

## INFINITI INTEGRATED HOMELINK® TRANSCEIVER

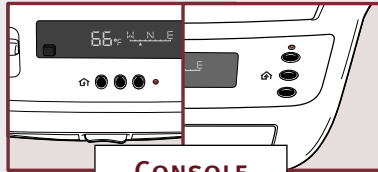
(If so equipped)



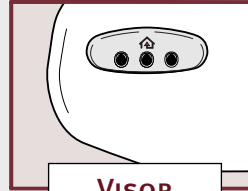
**⚠ WARNING:** During the set up procedure, the device you are programming (e.g., garage door, electric gate, entry door, etc.) will be activated. To avoid injury, make sure that people and objects are clear of all doors and gates during programming. Also, your vehicle's engine should be turned off while programming the HomeLink® Transceiver. Refer to your Owner's Manual for complete details.



MIRROR



CONSOLE



VISOR

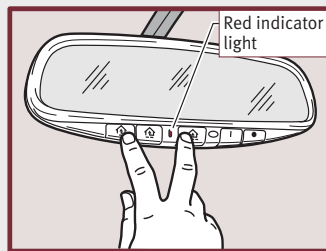
### PROGRAMMING YOUR INFINITI INTEGRATED HOMELINK® TRANSCEIVER

(Mirror controls shown; same steps apply for console and visor controls)

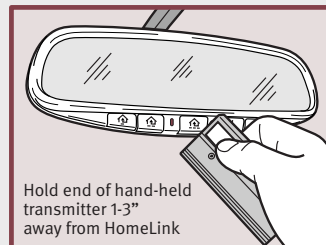
To program your HomeLink® Transceiver to operate a garage door, gate, home/office lighting, or entry door opener, you will need to be in the same location as the device.

**Note:** Garage door openers manufactured after 1996 have “rolling code protection.” To program a garage door opener equipped with rolling code protection, you will need to be able to reach the motor of the garage door opener. This is where the “smart” or “learn” program button is located. For this step (#5), you may need a ladder.

1. To begin, press and hold the two outer HomeLink® buttons to clear the memory. Hold down both buttons until the indicator light blinks (this should take about 20 seconds). Release the buttons.
2. Position the hand-held transmitter for the device you would like to program 1-3 inches away from the HomeLink® buttons.
3. Using both hands, simultaneously press and hold down the hand-held transmitter button and the HomeLink® button you want to program. **DO NOT** release these buttons until **Step 4 has been completed.**

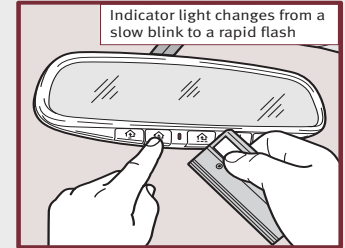


Step 1



Step 2

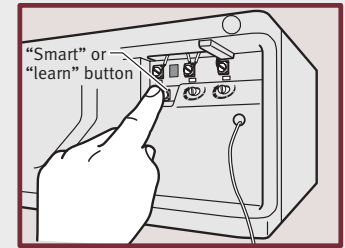
4. Continue to hold down both buttons until the HomeLink® indicator light flashes slowly then rapidly (this could take up to 90 seconds). The rapidly flashing light indicates successful programming, and at this point you can release the buttons. Your HomeLink® button should now be programmed. To confirm this, press the programmed button to activate the device.



Step 3-4

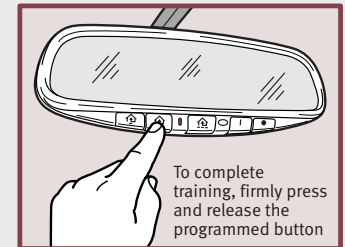
### If the HomeLink® Indicator Light Blinks Rapidly for Two Seconds and then Illuminates Solid...

HomeLink® has picked up a “rolling code” garage door opener signal. You will need to perform the following steps to “train” HomeLink® to complete programming. You may require a ladder and another person for convenience.



Step 5

5. To activate the training mode, press and release the “smart” or “learn” button located on the motor of the garage door opener. This button is usually near the antenna wire that hangs down from the motor. If the wire originates from under a light lens, you will need to remove the lens to access the button.



Step 6

**Note:** Once you have pressed and released the button on the motor, you will have **30 seconds** to perform the next step. For convenience, use the help of a second person.

6. Within 30 seconds of pressing the button on the motor, firmly press the HomeLink® button you've just tried to program, holding it down for two seconds and then releasing it. Repeat the “press/hold/release” sequence up to three times. When the indicator light illuminates solid/continuous, training is complete and your HomeLink button should now be programmed.

**To Program Remaining HomeLink® Buttons:** Perform Steps 2-4 (and 5 and 6, if needed) again. **DO NOT** perform Step 1 unless you want to clear all previously programmed HomeLink® buttons.

**To Activate Programmed Devices:** Press and hold the programmed HomeLink® button, releasing it when the device begins to activate.

If you have any questions or are having difficulty programming your HomeLink® buttons, please refer to the HomeLink® Web site at [www.HomeLink.com](http://www.HomeLink.com) or call 1-800-355-3515.

Fold here